



# Primary Years Programme

What Does It Mean?



Pinkerton Elementary  
an  
IB World School

*“We empower learners to become **inquirers** and **compassionate** individuals who make **innovative contributions** to our **global society.**”*



# IB Learner Profile

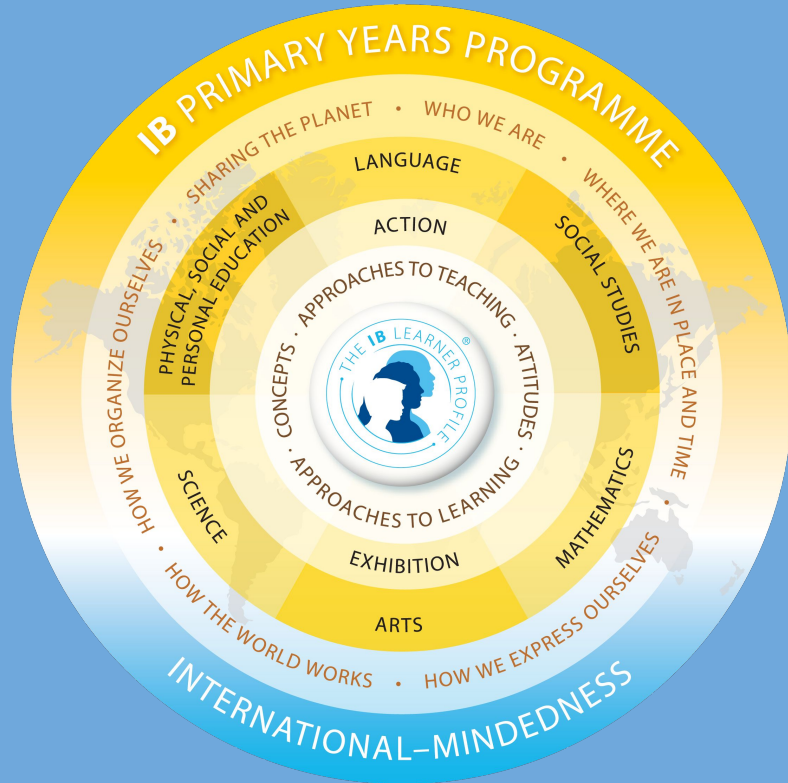
The IB learner profile is the IB mission statement translated into a set of learning outcomes for the 21st century.

As IB learners we strive to be:

- inquirers
- knowledgeable
- thinkers
- communicators
- principled
- open-minded
- caring
- risk-takers
- balanced
- reflective



# The Written Curriculum



- Knowledge
- Concepts
- Skills
- Attitudes
- Action

# Knowledge

What do we want students to know about?

- **Engaging**      Interesting and involved in inquiry learning
- **Relevant**      Connected to the lives of learners
- **Challenging**      Extended to increase competencies and understanding
- **Significant**      Understanding a commonality of human experiences

# Concept-Driven Curriculum

What do we want our learners to understand?

## Key Concepts

**Form** What is it like?

**Function** How does it work?

**Causation** Why is it like it is?

**Change** How is it changing?

**Connection** How is it connected to other things?

**Perspective** What are the points of view?

**Responsibility** What is our responsibility?

**Reflection** How do we know?



# Approaches to Learning Skills

What do we want our learners to be able to do?



- Thinking Skills
- Social Skills
- Communication Skills
- Self-Management Skills
- Research Skills

# PYP Attitudes

What do we want learners to feel, value and demonstrate?

- Appreciation
- Commitment
- Confidence
- Cooperation
- Creativity
- Curiosity
- Empathy
- Enthusiasm
- Independence
- Integrity
- Respect
- Tolerance



# Action

How do we want learners to act?



- Action Within
- Action Beyond

Take Action at Home

# The Taught Curriculum

How best will we learn?

- Inquiry-Based Curriculum
- TEKS
- PYP Scope and Sequence
- PYP Unit Planner
- Flexible Learning Spaces
- Outdoor Learning Center
- Spanish
- Problem Based Learning



# The Assessed Curriculum

## How do we know that we learned?

### Assessment

- Pre-Assessment
- Formative Assessment
- Summative Assessment

### Recording

- Observations
- Performance Assessments
- Process-focused Assessments
- Selected Response
- Open-ended Tasks

### Reporting

- Report Card
- Learner Profile Reflection
- Portfolios
- Conferences
- Exhibition

# How is IB different from other schools?



[Video](#)

[Parent as a Resource](#)

[Parent IB Resources](#)